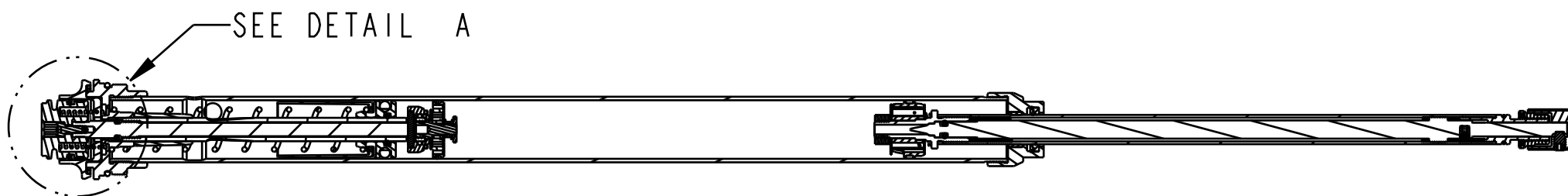


4

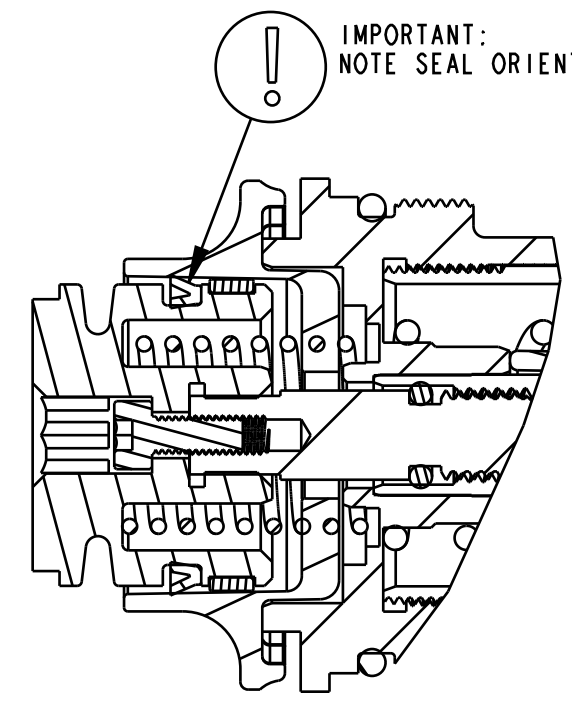
3

2

1

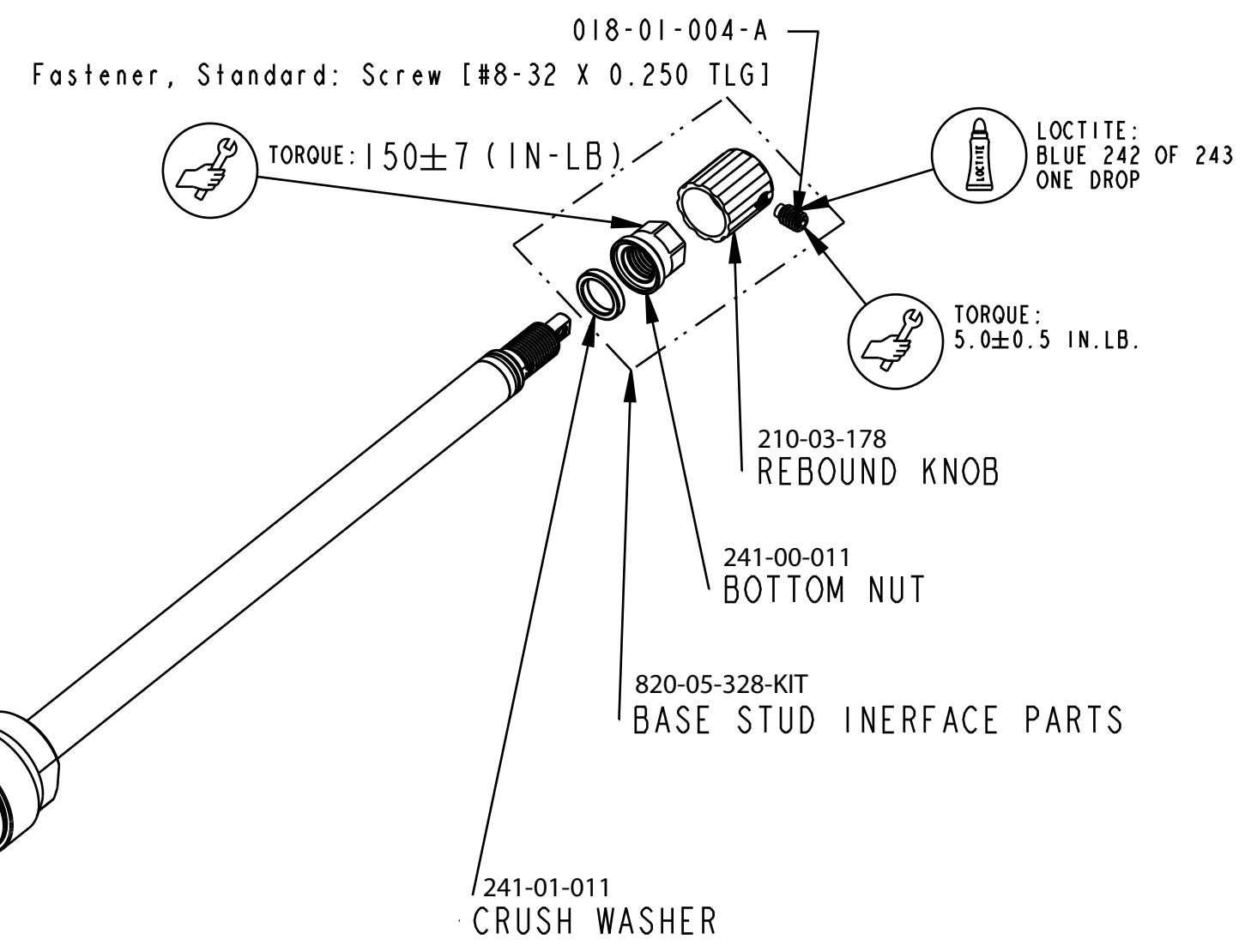


SECTION A-A
SCALE 0.500



DETAIL A
SCALE 2.000

IMPORTANT:
NOTE SEAL ORIENTATION



820-05-237-KIT
2017 Grip Remote, Topcap Interface Parts

210-24-087
Cable Pulley Remote, Grip

GREASE:
THIN LAYER BLUE MARINE GREASE
ID AND OD

TORQUE:
1.5±.15 IN.LB.

TORQUE:
220±5 IN.LB.

210-24-088
Damping Adjust Part: Housing, Remote, Hubless, FIT4

039-00-365
Spring: Torsion 2013 Damper CTD Remote, .048 Square Wire, 0.600 Mean Coil Diam (

002-02-074
Bearing, External: Glide Ring, Molded, Z-Cut, 20.0 Bore

036-01-044
Seals: U-Cup, Shore 70A, 2013 CTD-ADJ, Remote Fit-CTD and Remote O/C-CTD

TORQUE:
4±1 IN.LB.

IMPORTANT:
DO NOT ALLOW PULLEY
TO ROTATE WHILE TORQUING

019-01-115
Fastener Standard (Metric): Screw, Socket Head, M2.5 X 8

019-01-088
Set Screw [M4x4mm], SST, Cup Point, Patchlock

PROPRIETARY
THIS DOCUMENT CONTAINS CONFIDENTIAL, PROPRIETARY INFORMATION
THAT IS FOX PROPERTY. DO NOT DISCLOSE TO OR DUPLICATE
FOR OTHERS EXCEPT AS AUTHORIZED BY FOX.

FOX FOX Factory, Inc. Ph 831-768-1100
130 Hangar Way, Watsonville, CA 95076 USA Fax 831-768-9312

TITLE
**Cartridge Assy Complete,
34 Grip Remote**

SIZE DWG. NO.
C

PLOT SCALE 0.75

SHEET 1 OF 1

ProE ASSEM

4

3

2

1